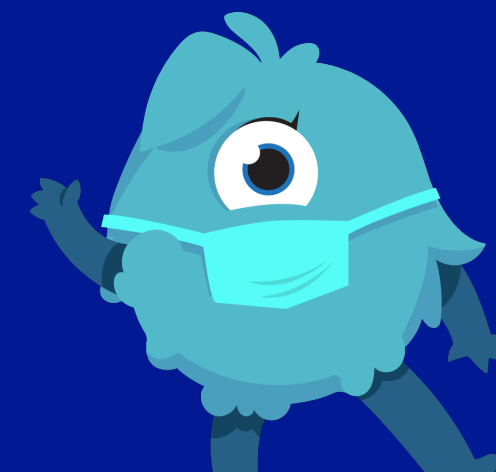


FLORENCE MELLY COMMUNITY PRIMARY SCHOOL

GOVERNOR ATTENDANCE RECORD

2019/20 ACADEMIC YEAR



Name	Category of Governor	Role	23/10/19 (Full Governors)	14/01/19 (Full Governors)	12/05/20 (Full Governors)	18/06/20 (175 Audit Special Meeting)	29/06/20 (Full Governors)
Kenneth Heaton	Headteacher	N/A	PRESENT	PRESENT	RESIGNED	N/A	N/A
Rev Tom Allen	Co-opted Governor	Chair of Governors (Resigned as Chair on 23/10/19)	PRESENT	PRESENT	APOLOGIES	N/A	APOLOGIES
Janet Matthews	Co-opted Governor	Chair of Governors (Chair from 14/01/20)	PRESENT	PRESENT	PRESENT	PRESENT	PRESENT
Clare Gallagher	Parent Governor	Vice Chair of Governors (Vice Chair from 14/01/20)	PRESENT	PRESENT	PRESENT	PRESENT	APOLOGIES
Joseph Doyle	Staff Governor	N/A	PRESENT	APOLOGIES	PRESENT	N/A	ABSENT
Rev Jean Flood	Co-opted Governor	N/A	APOLOGIES	RESIGNED	N/A	N/A	N/A
Carl Gilbertson	Co-opted Governor	N/A	PRESENT	PRESENT	PRESENT	N/A	ABSENT
Sarah Yates	Co-opted Governor	N/A	PRESENT	PRESENT	PRESENT	N/A	PRESENT
Joan Stein	LA Representative	N/A	APOLOGIES	PRESENT	PRESENT	N/A	PRESENT
Roxanne Brookes	Parent Governor	N/A	APOLOGIES	ABSENT	PRESENT	N/A	PRESENT
Aaron Leach	Associate Governor/Acting Headteacher	N/A	PRESENT	APOLOGIES	PRESENT (Acting Headteacher 01/04/20)	PRESENT	PRESENT
Also Present							
Terry Brown	N/A	Clerk to Governors	PRESENT	PRESENT	ABSENT	N/A	PRESENT
Irene Kane	N/A	Business Manager	PRESENT	PRESENT	PRESENT	N/A	PRESENT
Kieran Baillie	N/A	Assistant Headteacher	PRESENT (PART)	PRESENT (PART)	PRESENT (Associate 01/05/20)	PRESENT	PRESENT
Stephen Drury	N/A	School Improvement Partner	N/A	PRESENT (PART)	N/A	N/A	N/A
Chloe Latta	N/A	EYFS Lead	N/A	PRESENT (PART)	N/A	N/A	N/A
Marion Campbell	N/A	EHAT Lead	N/A	N/A	N/A	PRESENT	N/A

IF YOU CAN DREAM IT, YOU CAN DO IT!