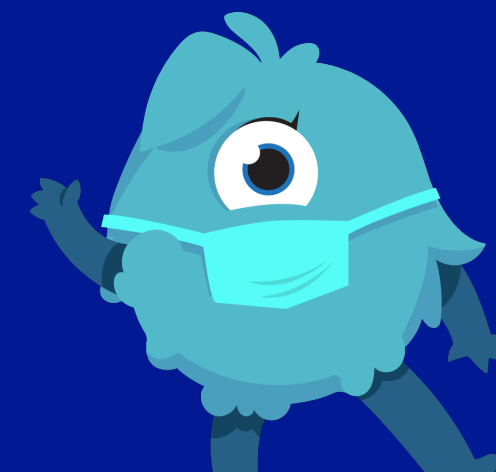


# FLORENCE MELLY COMMUNITY PRIMARY SCHOOL

## GOVERNOR ATTENDANCE RECORD

### 2020/21 ACADEMIC YEAR



| Name                  | Category of Governor                   | Role                      | 14/10/20<br>(Full Governors) | 14/01/21<br>(Full Governors) | 17/03/21<br>(Full Governors) | 19/05/21<br>(Full Governors) | 14/07/21<br>(Full Governors) |
|-----------------------|--|---------------------------|------------------------------|------------------------------|------------------------------|------------------------------|------------------------------|
| Aaron Leach           | Headteacher                            | N/A                       | PRESENT                      | PRESENT                      | PRESENT                      | PRESENT                      | PRESENT                      |
| Rev Tom Allen         | Co-opted Governor                      | N/A                       | PRESENT                      | APOLOGIES                    | APOLOGIES                    | APOLOGIES                    | APOLOGIES                    |
| Janet Matthews        | Co-opted Governor                      | Chair of Governors        | PRESENT                      | PRESENT                      | PRESENT                      | PRESENT                      | PRESENT                      |
| Clare Gallagher       | Parent Governor                        | Vice Chair of Governors   | PRESENT                      | PRESENT                      | PRESENT                      | PRESENT                      | PRESENT                      |
| Joseph Doyle          | Staff Governor (End of Term 09/09/20)  | N/A                       | APOLOGIES                    | N/A                          | N/A                          | N/A                          | N/A                          |
| Carl Gilbertson       | Co-opted Governor                      | N/A                       | PRESENT                      | PRESENT                      | PRESENT                      | PRESENT                      | PRESENT                      |
| Sarah Yates           | Co-opted Governor                      | N/A                       | PRESENT                      | APOLOGIES                    | PRESENT                      | PRESENT                      | APOLOGIES                    |
| Joan Stein            | LA Representative                      | N/A                       | PRESENT                      | PRESENT                      | PRESENT                      | PRESENT                      | PRESENT                      |
| Roxanne Brookes       | Parent Governor                        | N/A                       | PRESENT                      | PRESENT                      | PRESENT                      | PRESENT                      | PRESENT                      |
| Kieran Baillie        | Associate Governor                     | N/A                       | PRESENT                      | PRESENT                      | PRESENT                      | PRESENT                      | PRESENT                      |
| Rose Findell          | Staff Governor (Appointed 01/01/21)    | N/A                       | N/A                          | APOLOGIES                    | PRESENT                      | PRESENT                      | PRESENT                      |
| Nikki Bear            | Associate Governor                     | N/A                       | N/A                          | N/A                          | N/A                          | APOLOGIES                    | PRESENT                      |
| Michaela Wright       | Co-opted Governor (Appointed 14/07/21) | N/A                       | N/A                          | N/A                          | N/A                          | N/A                          | PRESENT                      |
| <b>Also Present</b>   |  |                           |                              |                              |                              |                              |                              |
| Terry Brown           | N/A                                    | Clerk to Governors        | ABSENT                       | PRESENT                      | PRESENT                      | N/A                          | N/A                          |
| Irene Kane            | N/A                                    | Business Manager          | PRESENT                      | PRESENT                      | PRESENT                      | PRESENT                      | PRESENT                      |
| Darren Tyms           | N/A                                    | Acting Clerk to Governors | PRESENT                      | N/A                          | N/A                          | N/A                          | N/A                          |
| Elaine Dobinson-Evans | N/A                                    | Clerk to Governors        | N/A                          | N/A                          | N/A                          | PRESENT                      | PRESENT                      |

**IF YOU CAN DREAM IT, YOU CAN DO IT!**