

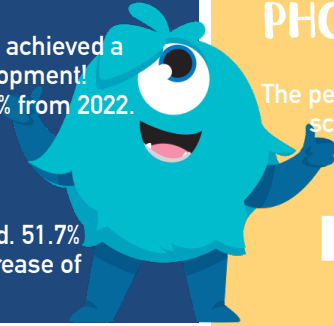
DATA HEADLINES - JULY 2023

OUTCOMES ARE IMPROVING IN EYF5!

65.0% of our Reception cohort achieved a Good Level of Development!
An improvement of +5.0% from 2022.

National GLD in 2022 was 65.0%.

Standards for our disadvantaged pupils also improved. 51.7% of disadvantaged pupils achieved GLD in 2023, an increase of 8.2% from 2022.

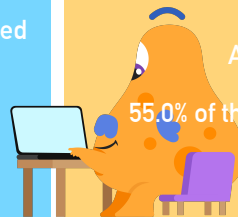


YEAR 1 PHONICS SCREENING CHECK

The percentage of Year 1 pupils meeting the phonics screening check standard at Florence Melly Community Primary School in 2023...

76.7%

An improvement 8.4% from 2022.



55.0% of those who passed did so securely, scoring 37-40 marks!



PSC AVERAGE POINTS SCORE

The average points score for the Phonics Screening Check increased in 2023.

32.0 - up from 31.2 in 2022 and higher than the APS in 2019, pre-pandemic!

ATTAINMENT IN KS1

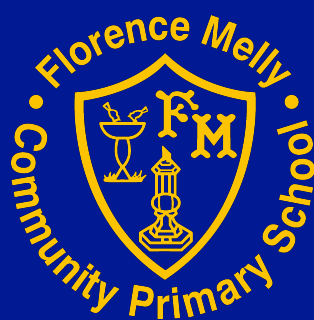
61.7%

of pupils achieved the expected standard in reading, writing and maths! An increase of 19.1% from 2022.

66.7% of pupils achieved the standard in reading and writing.

75.0% of pupils achieved the standard in maths.

76.7% of pupils achieved the standard in science.



RAISING STANDARDS IN KS1!

Improvements were made in ALL AREAS in KS1 in 2023 compared to 2022.

More children (including those who are disadvantaged) met the expected standard and more children achieved greater depth in ALL AREAS!

ATTAINMENT IN KS2

66.1%

The percentage of Year 6 pupils achieving the expected standard in reading, writing and maths in 2023; including 5.1% greater depth.

71.2% **68.3%** **75.0%** **58.3%** **71.7%**

of pupils achieved the standard in reading.

of pupils achieved the standard in writing.

of pupils achieved the standard in maths.

of pupils achieved the standard in EGPS.

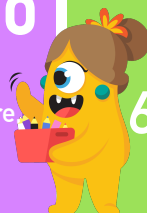
of pupils achieved the standard in science.

YEAR 4 MTC

The percentage of children who scored full marks in the Year 4 Multiplication Tables Check...

44.2%

21.1 Our average points score, compared to 19.8 nationally (in 2022).



CONTEXTUAL INFORMATION

60.7% of the cohort were FSM. **39.3%** were SEND with an additional 14.3% on our SEND initial concern list.



IF YOU CAN DREAM IT, YOU CAN DO IT!