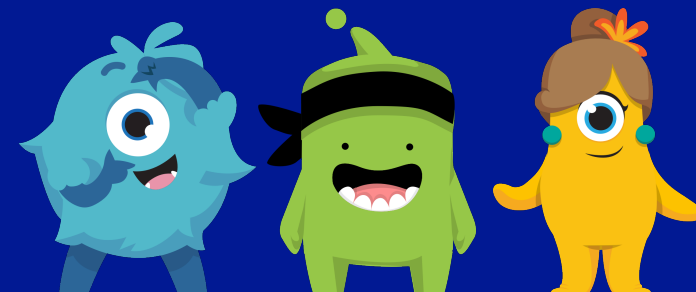


# FLORENCE MELLY COMMUNITY PRIMARY SCHOOL

# YEAR 2 TIMETABLE 2023/24

IF YOU CAN DREAM IT, YOU CAN DO IT!



Year 2 - Week 1												
	8:45 - 8:55	09:00 - 10:10		10:10-10:25	10:25 - 12.05		12:05 - 12:55	12:55 - 15:15				
<b>Monday</b>	Free-flow drop off/ morning activities and breakfast	<b>KS1 &amp; Year 3 Assembly</b> Cultural capital & PHSE focus 09:05 - 09:30	Maths 09:10 - 10:10		Phonics 10:25 - 11:05	Reading/ Writing 11:05 - 12:05		Science 12:55 - 14:05		Music 14:05 - 14:55	Whole-Class Reading/ Story Time 14:55 - 15:15	
<b>Tuesday</b>		Maths Basic Skills Retrieval skills 09:00 - 09:10						1:1 Reading/ Shared Reading/ Guided Reading/ phonics 12:55 - 13:30	History/Geography (Alternate subjects each half term) 13:30 - 14:40		Collective Worship 14:40 - 14:55	Whole-Class Reading/ Story Time 14:55 - 15:15
<b>Wednesday</b>	<b>PPA cover AM -</b> Mr Doyle - Mental Health Miss Jen - Allotment Miss Laura - Spanish			<b>Break</b>	<b>PPA cover AM -</b> Mr Doyle - Mental Health Miss Jen - Allotment Miss Laura - Spanish		Hall 12:05 - 12:25  Outside 12:25 - 12:55	<b>PPA cover PM -</b> Mr Baillie - Safeguarding or; Miss Bear - Core Values/Curriculum or; Mrs O'Keefe - SMSC/Reading and; Mr Moore - P.E.				
<b>Thursday</b>	Free-flow drop off/ morning activities and breakfast	Maths Basic Skills Retrieval skills 09:00 - 09:10	Maths 09:10 - 10:10		Phonics 10:25 - 11:05	Reading/ Writing 11:05 - 12:05		1:1 Reading/ Shared Reading/ Guided Reading/ phonics 12:55 - 13:30	Art/D&T (Alternate subjects each half term) 13:30 - 14:40		Collective Worship 14:40 - 14:55	Whole-Class Reading/ Story Time 14:55 - 15:15
<b>Friday</b>									<b>ICT Spring 1 - Alternative weeks for each class</b>		R.E 13:30 - 14:30	
								<b>ICT Summer 1 - PM session for both classes</b>				

## Year 2 - Week 2

	8:45 - 8:55	9:00 - 10:20	10:10 - 10:25	10:25 - 12:05	12:05 - 12:55	12:55 - 15:15					
<b>Monday</b>	Free-flow drop off/ morning activities and breakfast	<b>KS1 &amp; Yr 3 Assembly</b> Cultural capital & PHSE focus 09:05 - 09:30	<b>Break</b>	Phonics 10:25 - 11:05	Reading/ Writing 11:05 - 12:05	<b>Lunch</b>  Hall 12:05 - 12:25  Outside 12:25 - 12:55	Science 12:55 - 14:05	Music 14:05 - 14:55	Whole-Class Reading/ Story Time 14:55 - 15:15		
<b>Tuesday</b>		Maths Basic Skills Retrieval skills 09:00 - 09:10					Maths 09:10 - 10:10	1:1 Reading/ Shared Reading/ Guided Reading/ phonics 12:55 - 13:30	History/Geography (Alternate subjects each half term) 13:30 - 14:40	Collective Worship 14:40 - 14:55	Whole-Class Reading/ Story Time 14:55 - 15:15
<b>Wednesday</b>							P.E 2B (Teacher Led) 12:55 - 13:55	P.E 2D (Teacher Led) 13:55 - 14:55	Whole-Class Reading/ Story Time 14:55 - 15:15		
<b>Thursday</b>							1:1 Reading/ Shared Reading/ Guided Reading/ phonics 12:55 - 13:30	Art/D&T (Alternate subjects each half term) 13:30 - 14:40	Collective Worship 14:40 - 14:55	Whole-Class Reading/ Story Time 14:55 - 15:15	
<b>Friday</b>							SMSC 13:30 - 14:30	<b>Mr Leach's Celebration Assembly</b> 14:30- 15:05			
<b>ICT Spring 1</b> - Alternative weeks for each class			<b>ICT Summer 1</b> - PM session for both classes								